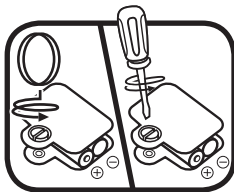


# Toot-Toot Drivers®

## User's Manual

### BATTERY INSTALLATION

1. Make sure the unit is turned **OFF**.
2. Locate the battery cover on the bottom of the unit. Use a coin or a screwdriver to loosen the screw.
3. Install 2 new AAA (AM-4/LR03) batteries following the diagram inside the battery box. (The use of new alkaline batteries is recommended for maximum performance.)
4. Replace the battery cover and tighten the screw to secure.

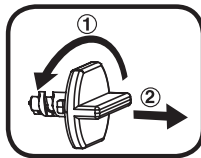


**WARNING:** All packing materials, such as tape, plastic sheets, packaging locks and tags are not part of this toy, and should be discarded for your child's safety.

**NOTE:** Please keep user's manual as it contains important information.

### Unlock the packaging locks:

- ① Turn the packaging lock anticlockwise several times.
- ② Pull out and discard the packaging lock.



### BATTERY NOTICE

- Use new alkaline batteries or fully charged NI-MH (Nickel Metal-hydride) rechargeable batteries for best performance.
- Use only batteries of the same or equivalent type as recommended.
- Do not mix different types of batteries: alkaline, standard (carbon-zinc) or rechargeable (Ni-Cd, Ni-MH), or new and used batteries.
- Do not use damaged batteries.
- Insert batteries with the correct polarity.
- Do not short-circuit the battery terminals.
- Remove exhausted batteries from the toy.
- Remove batteries during long periods of non-use.
- Do not dispose of batteries in fire.
- Do not charge non-rechargeable batteries.
- Remove rechargeable batteries from the toy before charging (if removable).
- Rechargeable batteries are only to be charged under adult supervision.

1

91-003642-000 UK

2

### Disposal of batteries and product



The crossed-out wheeled bin symbols on products and batteries, or on their respective packaging, indicates they must not be disposed of in domestic waste as they contain substances that can be damaging to the environment and human health.



The chemical symbols Hg, Cd or Pb, where marked, indicate that the battery contains more than the specified value of mercury (Hg), cadmium (Cd) or lead (Pb) set out in Battery Directive (2006/66/EC).

The solid bar indicates that the product was placed on the market after 13th August, 2005.

Help protect the environment by disposing of your product or batteries responsibly.

For more information, please visit:

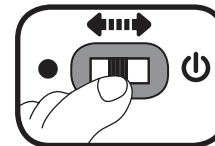
[www.recycle-more.co.uk](http://www.recycle-more.co.uk)

[www.recyclenow.com](http://www.recyclenow.com)

### PRODUCT FEATURES

#### 1. ON/OFF SWITCH

To turn the unit **ON**, slide the **ON/OFF SWITCH** to the **ON (⏻)** position. To turn the unit **OFF**, slide the **ON/OFF SWITCH** to the **OFF (●)** position.



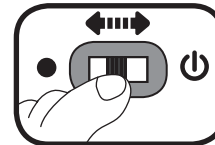
#### 2. AUTOMATIC SHUT-OFF

To preserve battery life, the **VTech® Toot-Toot Drivers®** will automatically power-down after approximately 60 seconds without input. The unit can only be turned on again by pressing the light-up button or pushing the vehicle quickly.

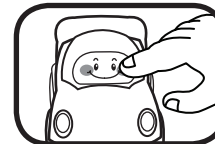
**Note:** This product is in a try-me mode in the packaging. After opening the package, turn the vehicle off and on again to proceed with normal play. If the unit powers down while playing, we suggest changing the batteries.


### ACTIVITIES

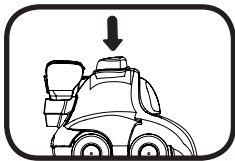
1. Slide the **ON/OFF SWITCH** to turn the unit **ON**. You will hear sounds, a song and a phrase. The light will flash with the sounds.



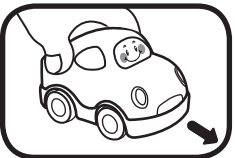
2. Press the **LIGHT UP BUTTON** to hear sounds, songs, phrases and melodies. The light will flash with the sounds.



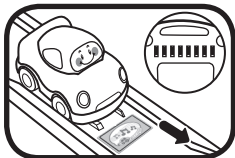
3. Press the **GEAR BUTTON** (  ) on the vehicle to activate a mechanical function on the vehicle and hear fun sounds. The light will flash with the sounds



4. Push the vehicle to hear fun sounds. While a melody is playing, push the vehicle again to add in fun sounds on the top of the melody. The light will flash with the sounds.



5. For added fun, the vehicle interacts with **VTech® Toot-Toot Drivers®** tracks. Simply roll the vehicle over one of the tracks' SmartPoints to see the light flash and to hear greetings, fun sounds, short tunes and sing-along songs (Tracks sold separately).



## CARE & MAINTENANCE

1. Keep the unit clean by wiping it with a slightly damp cloth.
2. Keep the unit out of direct sunlight and away from any direct heat source.
3. Remove the batteries when the unit is not in use for an extended period of time.
4. Do not drop the unit on hard surfaces and do not expose the unit to moisture or water.

## TROUBLESHOOTING

If for some reason the unit stops working or malfunctions, please follow these steps:

1. Please turn the unit **OFF**.
2. Interrupt the power supply by removing the batteries.
3. Let the unit stand for a few minutes, then replace the batteries.
4. Turn the unit **ON**. The unit should now be ready to play again.
5. If the product still does not work, replace with a new set of batteries.

If the problem persists, please call our Consumer Services Department and a service representative will be happy to help you.

3

## CONSUMER SERVICES

Creating and developing VTech products is accompanied by a responsibility that we at **VTech®** take very seriously. We make every effort to ensure the accuracy of the information, which forms the value of our products. However, errors sometimes can occur. It is important for you to know that we stand behind our products and encourage you to call our Consumer Services Department with any problems and/or suggestions that you might have. A service representative will be happy to help you.

UK Customers:

Phone: 0330 678 0149 (from UK) or +44 330 678 0149 (outside UK)

Website: [www.vtech.co.uk/support](http://www.vtech.co.uk/support)

Australian Customers:

Phone: 1800 862 155

Website: [support.vtech.com.au](http://support.vtech.com.au)

NZ Customers:

Phone: 0800 400 785

Website: [support.vtech.com.au](http://support.vtech.com.au)

## Product Warranty / Consumer Guarantees

UK Customers:

Read our complete warranty policy online at [vtech.co.uk/warranty](http://vtech.co.uk/warranty).

Australian Customers:

VTECH ELECTRONICS (AUSTRALIA) PTY LIMITED – CONSUMER GUARANTEES

Under the Australian Consumer Law, a number of consumer guarantees apply to goods and services supplied by VTech Electronics (Australia) Pty Limited. Please refer to [vtech.com.au/consumerguarantees](http://vtech.com.au/consumerguarantees) for further information.

CLASS 1  
LED PRODUCT

4



**Visit our website for more  
information about our products,  
downloads, resources and more.**

***[www.vtech.co.uk](http://www.vtech.co.uk)***  
***[www.vtech.com.au](http://www.vtech.com.au)***



TM & © 2018 Vtech Holdings Limited.  
All rights reserved.  
**Printed in China.**  
91-003642-000